

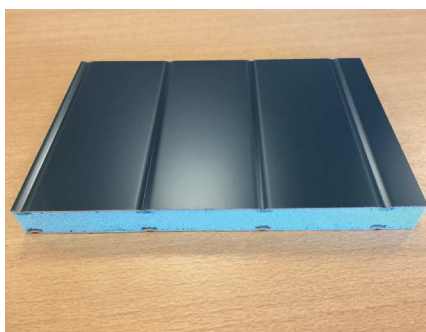


### Thermal shutter panels

The **aluminium XPS shutter panels** are part of the **CLOSING** product range. They are assembled with a bonding technique with a bi-component polyurethane glue which allows excellent mechanical properties and guarantees the quality.

This insulating panels saves you a considerable amount of manufacturing time, allowing a rapid cut of the panel, regardless of the shape.

AV Composites thus developed a large range of panels for the manufacturing of aluminium window shutters : a solid and unalterable panel.



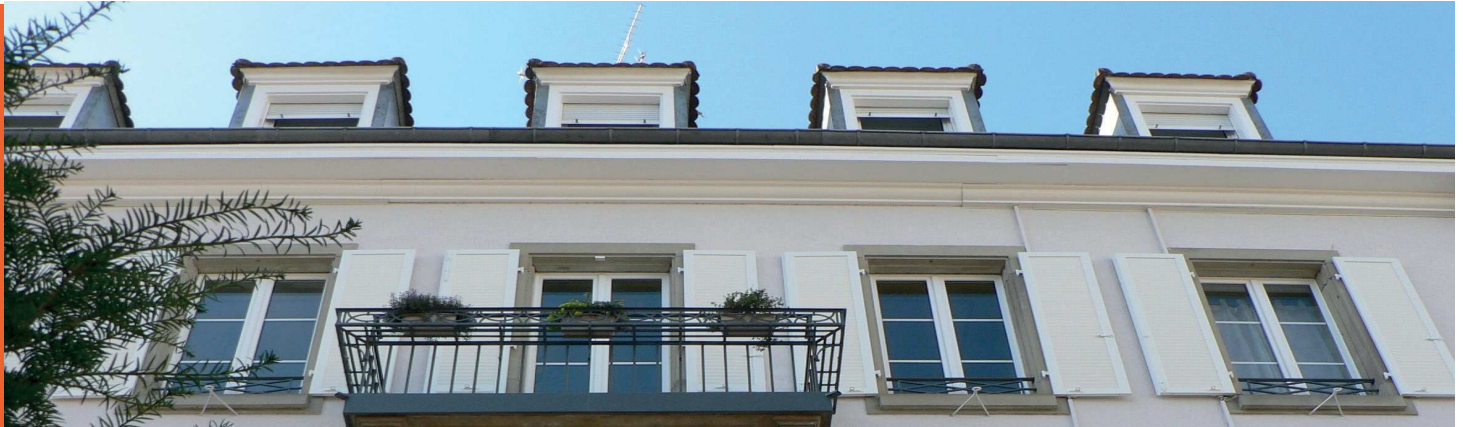
VX27 - VX28



ZA de la Massane  
11 Av. des Joncades Basses  
13210 Saint Rémy de Provence - FRANCE  
contact@avcomposites.com  
www.avcomposites.com  
Tel : +33 (0)4 32 61 92 95

Authorized Retailer

**Prizewinner of the 2010 INPI Innovation Trophies**  
**Prizewinner of the 2010 DELOITTE Technology Fast 50**



## Technical Specifications

### 1 Covering

#### External and internal facing

Aluminium sheet (thickness 8/10th) lacquered with a polyester resin and a UV resistant film

#### Wainscoating effect

Standard grooves' width: 85mm  
Other widths: contact us

### 2 Core of the panel

#### Insulating core

Extruded polystyrene,  $\lambda = 0.028$ , without CFC

### 3 Gluing

#### Polyurethane two-component adhesive

### 4 Thickness of finished panels

Filling range: 27, 28mm  
Others: contact us

### 5 Panels specifications

#### Thermal loss coefficient

$U = K = 0,96 (27) - 0,91 (28) W / K.m^2$

#### Thermal Resistance R

$R = 1,03 (27) - 1,08 (28) K.m^2 / W$

#### Fire resistance

M1 Quality,  
according to LNE N° P107497 certification

### 6 Dimensions - Weights

**Width** 1200 mm (Alu 8/10) -

1485mm (Alu 10/10)

**Length** 2500 à 7500 with steps of 250mm

**Weight** Alu 8/10: 5,29 (27) - 5,35 (28) kg/m<sup>2</sup>

Alu 10/10: 6,75 (27) - 6,80 (28) kg/m<sup>2</sup>

### 7 Warranty

Company Civil Insurance N° 2/700062



*The installation of our systems must be made with the accessories of the AV Composites range. In case of dispute, the guarantees only apply if the user recommendations contained in our data sheets and Technical Notice, are met. Dark exterior color holding (such as: Slate) can not be guaranteed in time. The advice and technical data refer to real informations and practical experiences. They are offered in good faith but without guarantee, since the conditions and methods of use are not under our control. We reserve the right to make change at any time without notice.*